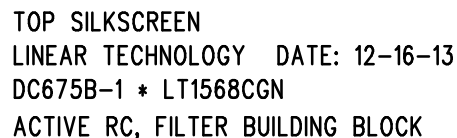
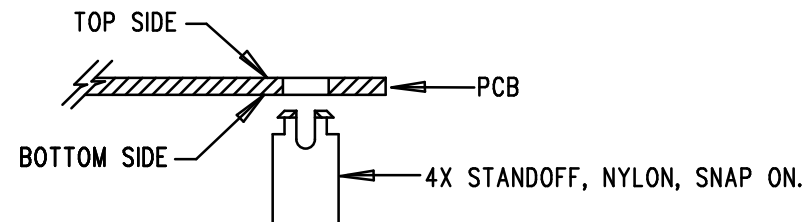



NOTES: UNLESS OTHERWISE SPECIFIED

- JP1 : DUAL SUPPLY

5. DEPANELIZE BOARDS AFTER ASSEMBLY AND ROUT-OUT THE BREAKOUT TABS ON FOUR SIDES OF THE BOARD EDGE.
6. DO NOT APPLY ANY KIND OF ASSEMBLY STAMP OR QA STAMP TO ANY BOARD.
7. INSTALL 4 STANDOFFS AT 4 LOCATIONS AS SHOWN BELOW:



APPROVALS				1630 MCCARTHY BLVD MILPITAS, CA 95035 PH: (408)432-1900 www.linear.com LTC CONFIDENTIAL- FOR CUSTOMER USE ONLY	
PCB DES.	AK				
APP ENG.	PHILIP K.	TITLE: TOP ASSEMBLY DRAWING ACTIVE RC, FILTER BUILDING BLOCK			
		SIZE	IC NO.	LT1568CGN	REV.
		N/A	DEMO CIRCUIT 675B		2
SCALE = NONE		FILENAME: DC675B-2.PCB			SHT 1 OF 1